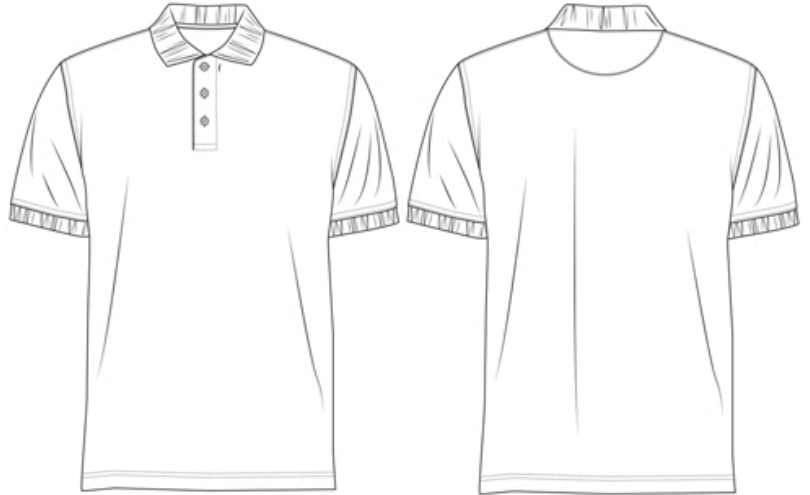


Men's short sleeved pique polo. 1x1 rib flat knit collar and cuffs. Three button slanted top placket. Taped back neck and shoulder seams. Half moon yoke on back. Twin needle hem. Side Vents. Double stitched armholes, shoulders and around cuff. Superwash® 60° swing ticket. Kustom Kit® tear out label.

### Features

- Superwash® 60°
- Tear out label
- 100% Combed Ringspun Cotton
- Side vents



### Fabric

100% Combed Ringspun Cotton

### Country of Origin

Pakistan

### Weight

200gsm

### Commodity Code

6105 10 00 00

### Fit

Classic

### Wash Care\*



\*Always read the care label prior to laundering.

### Colours\*



**BLACK**  
PANTONE  
BLACK C  
C:0 M:0 Y:0 K:100



**WHITE**  
PANTONE  
7541 C  
C:0 M:0 Y:0 K:0



**NAVY**  
PANTONE  
2767 C  
C:100 M:78 Y:0 K:54



**DARK GREY**  
PANTONE  
424 C  
C:0 M:0 Y:0 K:61



**HEATHER GREY MARL**  
PANTONE  
COOL GREY 8 C  
C:0 M:1 Y:0 K:43

\*These colour references are provided for replication of Kustom Kit® colours in printed materials and online only. Whilst these represent the closest possible pantone match, they should not be used as a direct comparison to actual garment colours.

### Sizes and Dimensions

Size	XS	S	M	L	XL	2XL	3XL
Chest to fit in inches	32-34	36-38	40	42	44	46-48	50-52
Actual chest in cm	98	106	111	116	121	132	142
Length in cm (shoulder to hem)	65	71	74	77	79	81	83
Sleeve length in cm (underarm inc. cuff)	15	15	16	16	17	17	18

### Accreditations



Factory is also audited annually by BSCI (Business Social Compliance Initiative)